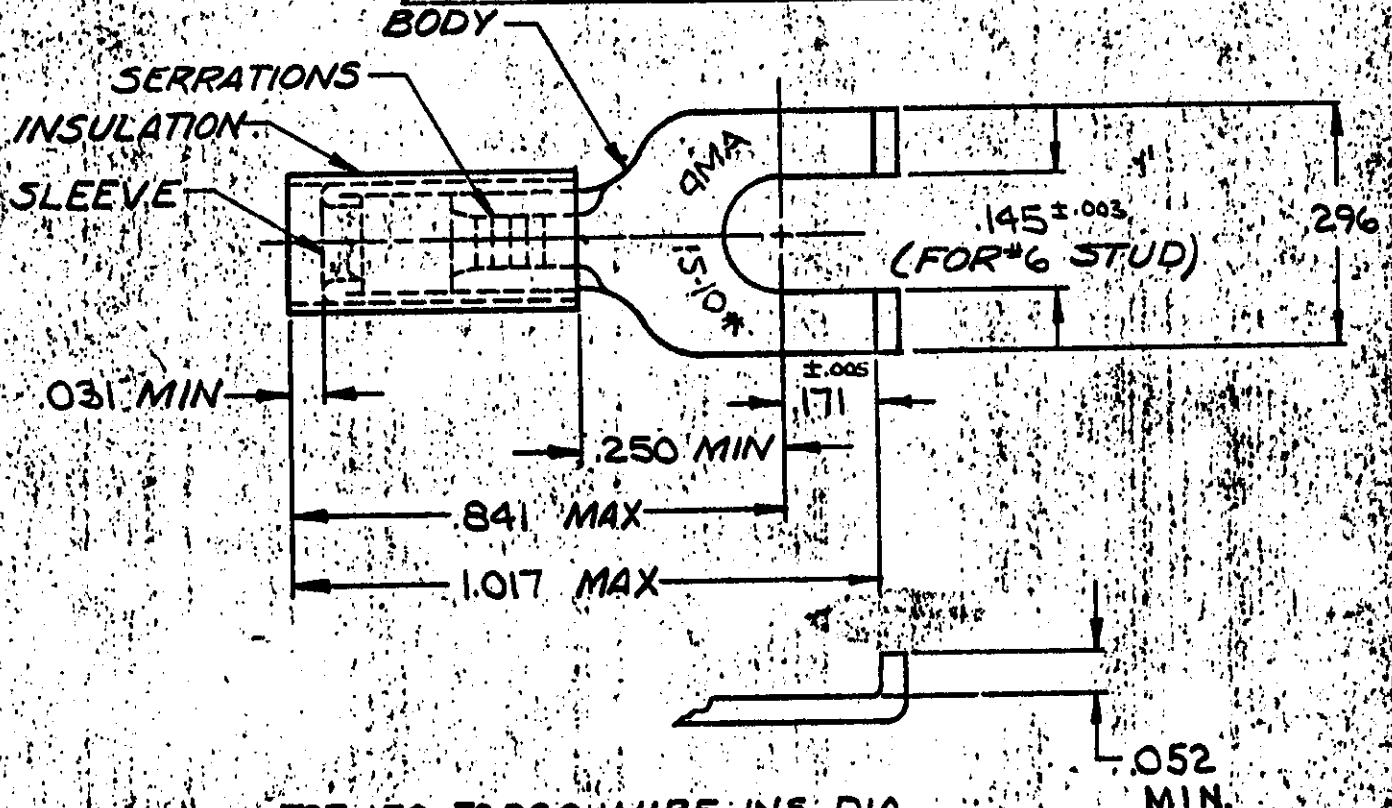


DRAWING MADE IN AMERICAN PROJECTION

LOC 6 PRINT DIST 14

©1957 BY AMP INCORPORATED. ALL RIGHTS RESERVED. AMP PRODUCTS COVERED BY PATENTS AND/OR PATENTS PENDING.

REVISIONS			
LTR	DESCRIPTION	DATE	APPROVED
B	REDRAWN & ADDED TAPE NO'S P-6080	5-8-70	<i>[Signature]</i>
C	REVISED F-636 & P-6925	9-9-74	P.M. Maglieri
D	REV PER G-4732	7/26/88	<i>[Signature]</i>
E	REV PER G-5646	1/21/91	DKS/mk



QTY	DESCRIPTION	PART NO	MATERIAL & FINISH
1	324577 ON TAPE	1-324577-0	SLEEVE: COPPER (QQ-C-576) BODY: COPPER (QQ-C-576) TIN PL (MIL-T-10727)
1	WIRE TERMINAL	324577	INSULATION: NYLON COLOR: YELLOW
UNLESS OTHERWISE SPECIFIED DIMENSIONS ARE IN INCHES TOLERANCES ON DECIMALS: ± .008 ANGLES: 5°			AMP INCORPORATED HARRISBURG, PENNSYLVANIA
MATERIAL		CONTRACT NO. 4	AMP
SEE TABLE		DR. <i>[Signature]</i> 5-4-70	NAME WIRE TERMINAL
		CHK <i>[Signature]</i> 5-8-70	P.I.D.G. - FLANGED SPADE
		APPD <i>[Signature]</i> 5-11-70	WIRE SIZE: 12-10
		REL <i>[Signature]</i> 5-11-70	SIZE A
		DSGN WPPD	CODE IDENT NO. 00779
		OTHER APPD	NUMBER 324577
		SCALE NTS	SHEET 1 OF 1